



#BetterOffBlue17

Creating synergies for a biobased society

How to integrate maritime cultural heritage into maritime spatial planning?

Susanne Altvater, s.Pro

Linkage between coastal and marine sites

Underwater cultural landscape



73
THE NORTH
SEA AND ITS
EARLY TRADING
PORTS

Harbours and trading
roads in the past



Valetta Convention (1992)



Articles in brief:

1. Broad definition of “archaeological heritage”;
2. Maintenance of an inventory of archaeology heritage, including creation of “archaeological reserves” for the preservation of material evidence;
3. Application of appropriate procedures for intrusive archaeological investigation;
4. Provision of resources to acquire and conserve sites and monuments including archive and find repositories;
5. Integration of archaeology into the planning regime;
6. Private or public sectors to meet costs of preliminary archaeological operations and collection and dissemination of information;
7. Preliminary publication of excavation results (similar provision also made in Article 8);
9. Develop public awareness of the value of archaeological heritage: and

Environmental Impact Assessment (EIA)

- Nord Stream 1-2
- Baltic Connector
- Marine wind mill parks
- Shipping lines
- Harbour developments

Pori, Kallonlahti
wreck, photo: NBA



The wreck of Sofia Maria, photo: T. Salminen



Tornio, Röyttä wind farm
area: an underwater
landscape of a saw mill,
photo: NBA

Current approaches to integrate MCH into MSP



- **BE:** The MSP for the Belgian Part of the North Sea was adopted in March 2014 and considers *UCH as use, no designated areas*; Shipwrecks are protected under a new law for underwater cultural heritage (Law of 4 April 2014 on the protection of underwater cultural heritage).
- **NL:** Policy document on the North Sea 2016-2021 *with designated uses*, i.a. UCH: The conservation of underwater cultural heritage is assessed when making spatial planning decisions on activities.
- **DE:** **EEZs** for North Sea and Baltic Sea; *UCH is taken into account as sector* with spatially relevant specifications but has *no designated areas*; SEA taking UCH into account

How strong are MSP approaches to protect and incorporate UCH?

Better
off Blue

- Not all MS with MSPs include UCH
- Those MSPs which take UCH into account:
 - Measures very broad, overall
 - No strategic approach how to incorporate UCH
 - Very few designated areas
 - Rare or no use of synergies
 - EIA as only available tool to take UCH into account



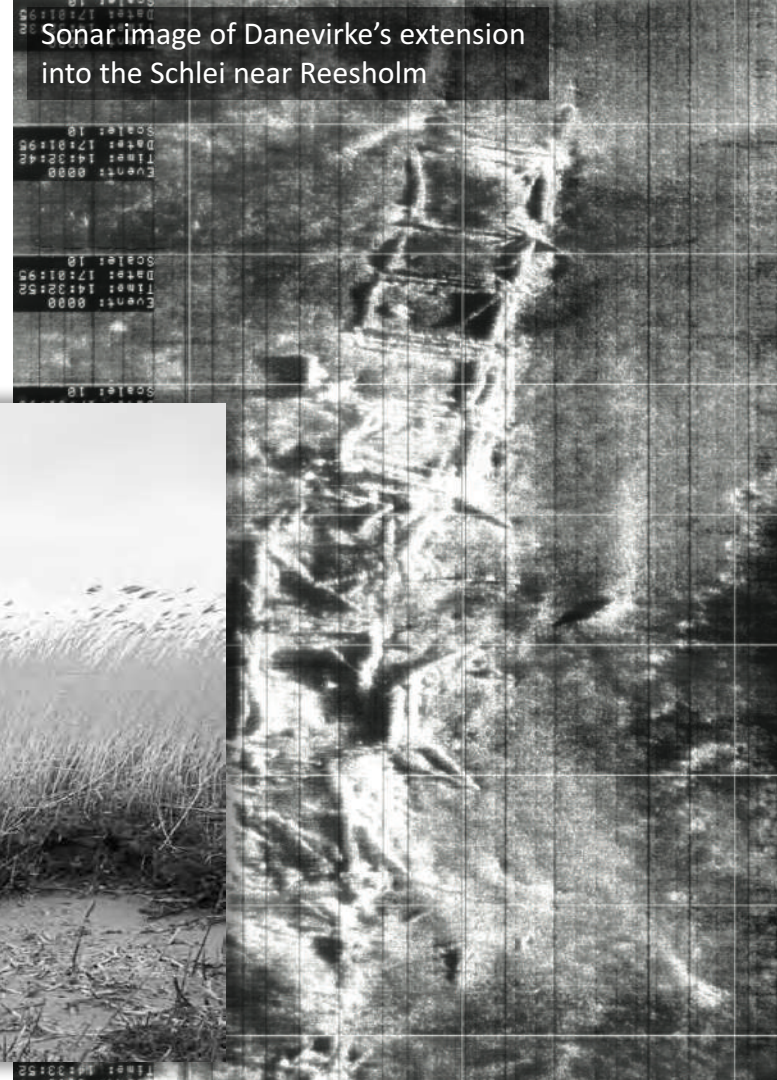
Shipwrecks & ship-timbers



(Photo: Englert 2015)

Underwater structures

Sonar image of Danevirke's extension into the Schlei near Reesholm



Pile-structure of the “Jürgensburg” at low tide



(Photo: Rösch, Müller & Dörfler 2014)

Synergies with



Better
off Blue

Photo:P.Tuuri

- Blue Growth/tourism: museums, exhibitions on Europe's maritime history, telling the story of the seas, publications etc.
- Blue Growth/recreation and leisure: underwater parks and dive trails, opportunities for divers and non-divers in situ and online, maritime landscapes and old maritime buildings
- Nature protection: shipwrecks and other archaeological artefacts as artificial reefs; MPAs: Presence of UCH protects marine environment from other uses like trawling
- Social aspects: identity building, well-being, sense of belonging, narratives, values of people, citizens own data etc.
- Data sharing: ships wrecks as a source for history, ecology, environmental history, spatial planning etc.



27.09.17

Maritime CH sites as multifunctional sites

#BetterOffBlue17

The Netherlands: Synergies with windfarm planning

- Wreck locations preserved within park: protection through ban on ship-passages
- Large infrastructural works with low social acceptance: positive publicity through UCH



MSP Database

We invite you to search for examples of MSP implementation experiences from throughout Europe in the extensive [Practices Database](#). Please also explore our [FAQ page](#), or [Submit a question](#) of your own!

Malta to host 'Our Ocean' 2017 Conference

Commissioner Karmenu Vella has announced that the EU will host the global 'Our Ocean' conference in Malta next year.

 All news

MSP Platform

 [Submit a Question](#)


 [Mission](#)

 [Services](#)

 [Our team](#)

MSP in Europe

The European Maritime Spatial Planning Platform provides a single interface to draw together experience and expertise from across Europe and make it available in a readily accessible, implementation-oriented format. It serves as the gateway and exchange forum for all involved in MSP throughout Europe.

 [Go to Country Overview](#)
or
[Choose country](#)


Upcoming Events

ICES Annual Science Conference

Scientists, policy- and decision-makers, students, and stakeholders are all invited to...

 All events

Tweets by @EU_MSP_Platform

 **EU MSP Platform** @EU_MSP_Platform
Read up on the #ICES theme session **Integration challenges in #MSP** tonight and tomorrow!
#ICESASC16 [ices.dk/news-and-event...](#)

 **EU MSP Platform** @EU_MSP_Platform

Open calls

"Blue Technology: transfer of innovative solutions to sea basin economies" is currently open - deadline is 30th of September. [more...](#)

 All funding programmes

Homepage

- **Practical experiences**
- Country information
- Sea Basin overview
- Funding opportunities
- News
- Upcoming events
- Twitter feed

Some reasons for weak incorporation of UCH into MSP



- Marine plans are ***spatial*** to indicate the most appropriate and inappropriate areas for development.
- Archaeology tends to be represented as ***spots*** = small, relatively few in number, protected (?) and therefore to be avoided.
- Historic environment is much broader than spot maps -> considerable uncertainties as to the ***presence, character and importance of features***
- Marine archaeological mapping and GIS portals are suffering due to
 - a *lack of common platforms*
 - short-term character of many mapping projects

Marine planners need archaeologists for advice: archaeologists need to be prepared to provide such advice, not only difficulties

New project: BalticRIM (Interreg)

WP 2

MSP related **MCH Mapping**

WP 4

Cross-sectoral Mapping and
Planning

WP 5

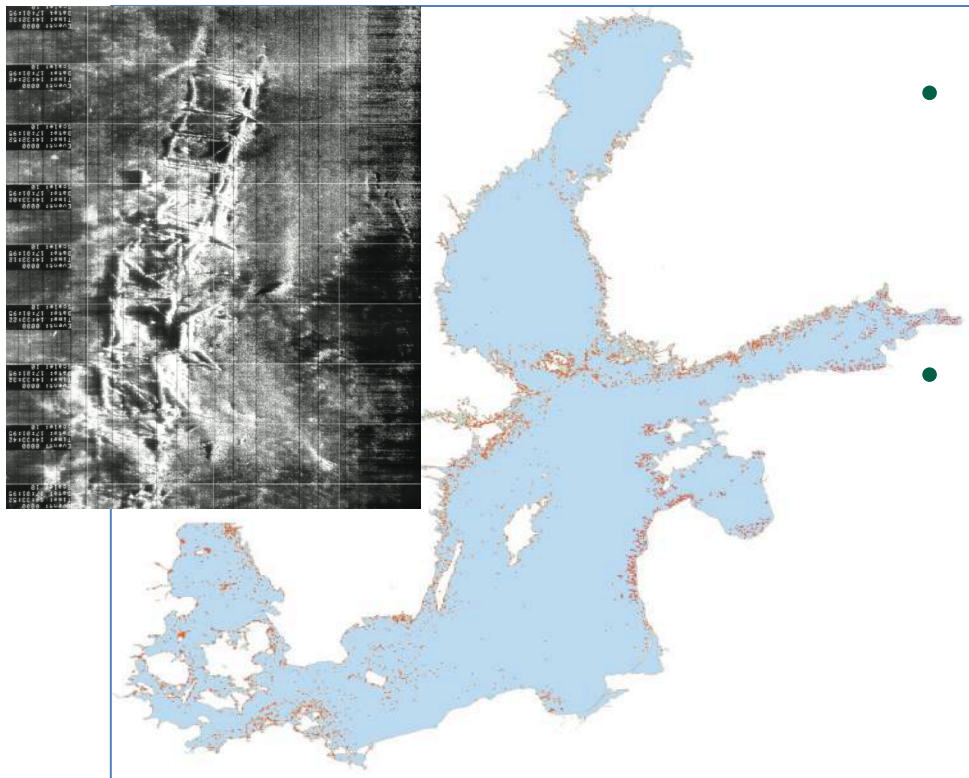
Blue Growth Cooperation and
Management solutions

WP 6 **Transnational outreach** & lessons learnt

WP 3 **Cross-sectoral dialogues**: Multi-level, cross-sectoral, transnational stakeholder involvement / Develop tools to include MCH into sectoral plans

WP 1- Project management (ALSH/EPCO)

Project on Maritime Cultural Heritage in Maritime Spatial Planning - BalticRIM (Interreg)



- **Analyse the relationship between MCH and MSP** and improve databases/terminology
- **Provide tools** to structure decision-making processes and **outline opportunities** for the MCH sector provided by the MSP processes

Project on Maritime Cultural Heritage in Maritime Spatial Planning - BalticRIM (Interreg)



- **Development of sectoral plans** per partner and pilot area **as basis for generic conflict and synergy matrices (also land-sea)**. -> matrices as **guidance for place-specific planning solutions**.
- **Series of workshops** -> MCH / MSP experts and other sectors will optimise and **implement spatial planning instruments** and **participation processes** within the **pilot areas**

Work Package 5

WP 2

WP 4

WP 5

Blue Growth

Cooperation and
Management solutions

WP

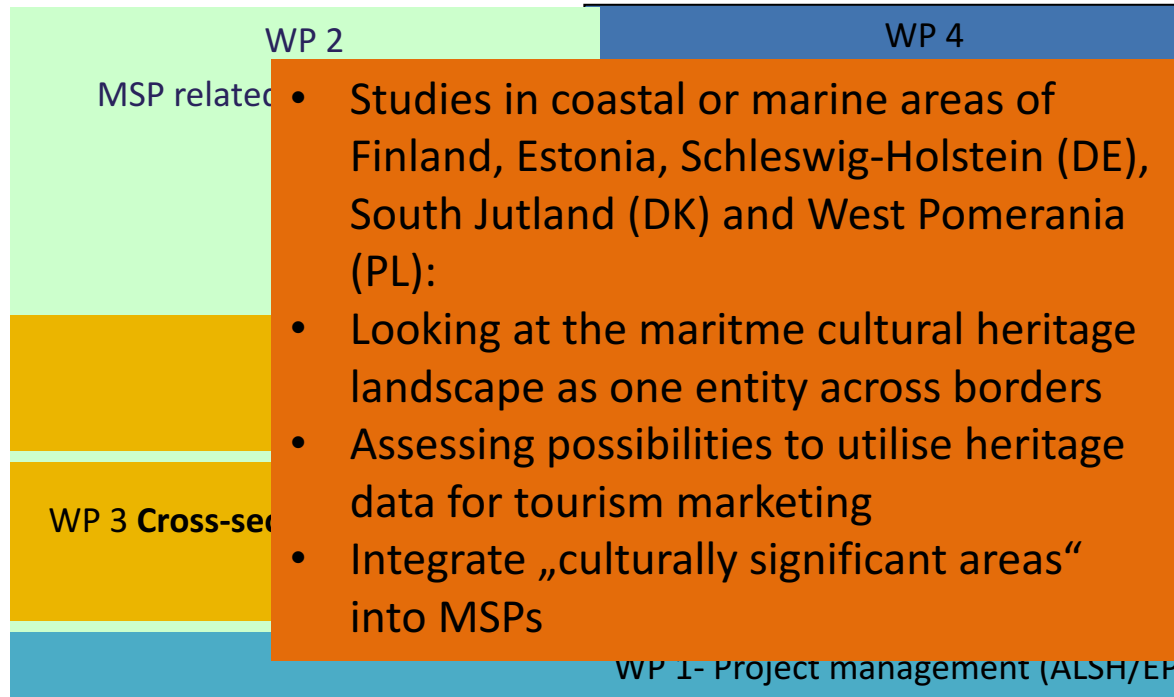


WP 1- Project



© Brandon Cole / www.brandoncole.com

Work Package 5



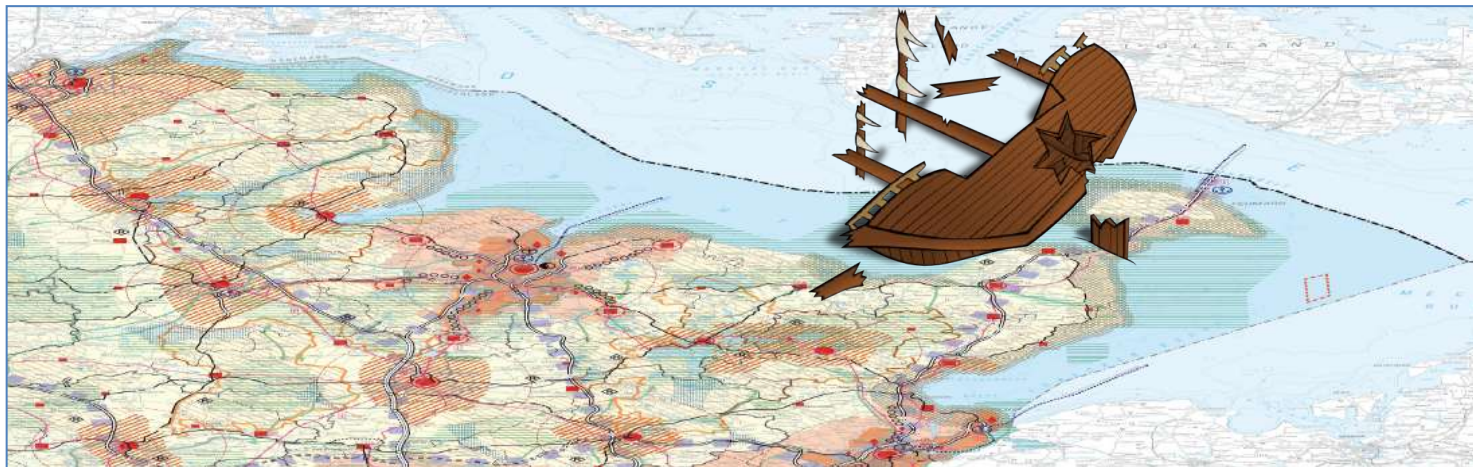
WP 5

Blue Growth Cooperation and Management solutions

- To explore new or revise cooperation concepts on local or trans-boundary level, including cost-benefit and Blue Growth aspects.
- Demonstration cases with one or two stakeholders

Conclusion

- **Share experience / perspectives**
- **Compare / analyse / understand**
- **Deliver instruments**



Project partners

PP	Abbrev	Country	Role / expertise
1 State Archaeological Department of Schleswig-Holstein	MCH	DE	MCH, tourism, data, exchange
2 Ostseefjord Schlei GmbH			Growth,
3 SUBMARINER		DE	LEIG, MSP, shipping, aquaculture, fishing/Blue Growth, stakeholder exchange
4 National Board of Antiquities			exchange, data
5 Park & Wildlife	MCH, MSP	FI	MCH, MSP, environmental protection
6 University of Turku	LITU	FI	MCH, data
7 Estonian Marine Institute			MSP, Blue Growth

National administrations and boards for cultural and natural heritage, universities, stakeholder network

Research institutes, MSP-related institutes and experts, Museums, Russian partners

MSP authorities and organisations